



QUALITY - RELIABILITY



CATALOGUE



FERRO-FLEX Gép- és Szerkezetgyártó Kft.

H-8693 Lengyeltóti, Rákóczi u. 30.

Telephone: +36 85 330 069

Fax: +36 85 530 027

E-mail: ferroflex@ferroflex.hu

management@ferroflex.hu

Web: www.ferroflex.hu



CONTENT

Front-end loaders	1.
FF1000, FF-750, FF-40 Front-end loaders	4.
Front-end loader implements	5.
Telehandler implements	9.
Field cultivator Subsoiler, Bag-lifter, Front-linkage	15.
Field cultivator, Subsoiler	16.
Front-linkage, Bag-lifter	18.
HUNOR T-16 Multipurpose trailer system with interchangeable bodies	19.
Industrial Building and Steel Constructions	23.



- Self locking automatic device



- Subframe kit to all tractor type



- Multi coupler
- Quick attach hydraulic block



- Additional hydraulic functions with high flowrate control valves 70 l/min



Control options:

- Distripilot
- Hidropilot
- DISTRONIC
- Servopilot



- High strength industrial steel
- Cast steel mounting brackets
- Quality, reliability

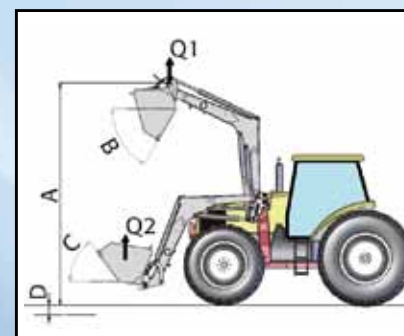


- Air-oil damping system
- Switch on-off option



- Safe and quick implement connection
- Automatic quick attach and release

SPECIFICATIONS	Prestige 60	Prestige 80	Prestige 100	Prestige 120	Prestige 150
Parallel linkage	yes	yes	yes	yes	yes
Tractor power	50-85	60-85	80-110	90-130	91-170
A Lift Height „m”	3,70	3,90	3,90	4,10	4,30
B Max.Dump angle	50°	55°	50°	55°	54°
C Max Rollback angle and ground level	55°	50°	46°	47°	45°
Q1 Lift capacity at 175 bar pressure „kg”	1400	1540	2300	2400	3150
Q2 Breakout force „kg”	1800	1990	2700	2350	3200
D Digging depth „m”	0,15	0,15	0,15	0,15	0,15

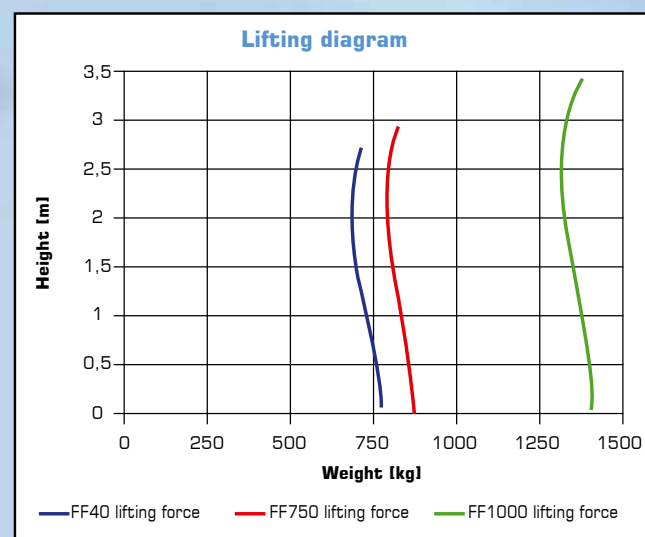


Features:

- Automatic quick attachment between the tractor and loader.
- Safe and fast implement replacement.
- Automatic connection and release.
- Constant implement angle at any height.



	FF40	FF750	FF1000
Tractor HP.	30-50 LE	30-50 LE	50-80 LE
Weight capacity at 170 bar pressure	700 kg	800 kg	1350 kg
Lifting height	2,6 m	2,9 m	3,3 m
Digging depth	20 cm	20 cm	20 cm
Max rollback angle	54°	54°	54°
Max dumping angle	57°	57°	57°
Weight	350 kg	365 kg	440 kg

**SOIL BUCKET**

TYPE	BT12S	BT15S	BT18S	BT20S	BT22S
Weight (kg)	135	170	185	200	222
Volume (l)	300	430	500	560	630
Width (m)	1,2	1,5	1,5	2	2,2

- Reinforced high strength material.
- Bolted teeth.

GRAIN BUCKET

TYPE	BR15S	BR18S	BR18SL	BR20S	BR20SL	BR23S	BR23SL
Weight (kg)	190	210	225	240	258	276	295
Volume (l)	580	650	650	800	800	1000	1000
Width (m)	1,5	1,8	1,8	2	2	2,3	2,3

- Reinforced high strength material.
- SL version: cutting edge can be turned over and replaced.

HIGH CAPACITY BUCKET

TYPE	BGC12S	BGC13S	BGC14S
Weight (kg)	440	465	500
Volume (l)	1200	1300	1450
Width (m)	2,1	2,3	2,45

- Reinforced high strength material.
- Bolted teeth.

HIGH DUMP BUCKET

TYPE	BDP180S	BDP200S	BDP225S	BDP230S
Weight (kg)	225	240	413	480
Volume (l)	500	650	1100	1500
Width (m)	1,8	2	2,25	2,3

- Tipping of bucket by double effect hydraulic cylinders.
- +1D Hydraulic function needed.
- At dump bucket edge equals with the lift height of the front loader.

MULTI FUNCTION BUCKET

TYPE	B4.1 150S	B4.1 170S	B4.1 200S	B4.1 220S
Weight (kg)	320	350	420	450
Volume (l)	300	320	420	430
Width (m)	1,5	1,7	2	2,2

- Reinforced high strength material.
- Bolted teeth.
- Opening and closing function by two double effect hydraulic cylinders.
- +1D Hydraulic function needed.



BEET AND POTATO BASKET	
TYPE	BL980S
Weight (kg)	410
Volume (l)	980
Width (m)	2

- Bucket body made of thick wall steel tube.
- Bucket edge made of round steel to protect beets and potatoes.



MANURE FORK				
TYPE	F12S	F15S	F17S	F20S
Weight (kg)	110	130	150	190
Width (m)	1,2	1,5	1,7	2

- Replaceable with double conic forged tines.
- Upper grab can be added.



MANURE GRAB							
TYPE	M12S	M15S	M15SL	M17S	M17SL	M20S	M20SL
Weight (kg)	150	220	220	250	250	293	293
Width (m)	1,2	1,5	1,5	1,7	1,7	2	2

- Replaceable with double conic forged tines.
- Replaceable upper teeth.
- +1D Hydraulic function needed.
- Grab function by two double effect hydraulic cylinders.



PELICAN							
TYPE	BP12S	BP15S	BP15SL	BP17S	BP17SL	BP20S	BP20SL
Weight (kg)	230	245	250	285	285	300	300
Width (m)	1,2	1,5	1,5	1,7	1,7	2	2

- Implement for loading liquid manure.
- Grab function by two double effect hydraulic cylinders.
- SL version: cutting edge can be turned over and replaced.
- Replaceable upper teeth.
- +1D Hydraulic function needed.



LOG GRAB	
TYPE	F1
Weight (kg)	350

- Log grab lift and grab logs by upper and lower arms using one hydraulic cylinder.
- Capable of loading 1250 mm logs in length.
- Frontloader must have 3 hydraulic functions.



BALE TINES		
TYPE	P1	P2
Weight (kg)	80	180
Volume (l)	0,8	2

- P1 Replaceable with double conic forged tines
Number of tines: 2
- P2 Replaceable forged tines with double cone
Number of tines: 6
Length of tines: 980 mm



BALE JAW	
TYPE	G1
Weight (kg)	125

- For Stacking of Round bales.
- +1D Hydraulic function needed.



CANYBAL		
TYPE	C1	C2
Weight (kg)	240	290

- Using this implement Lifting Height of front loader can be extended by 2 meters.
- Canybal C1: with P1 bale tines.
- Canybal C2: with P2 bale jaws.
- +2D hydraulic function needed.



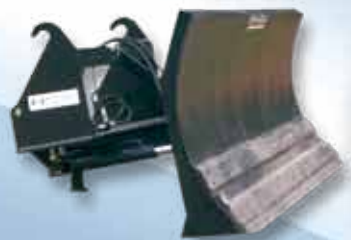
BOX TURNER	
TYPE	LF 1
Weight (kg)	280
Width (m)	1,5

- For transportation and safe dumping of standard and custom size MGTL boxes.
- While content is being dumped, implement holds each side of the box, thus providing minimum risk of box-breaking.
- Hydraulic turning direction, max load is 500 kg.
- +1D Hydraulic function needed.



WRAPPED BALE GRAPPLE	
TYPE	PB
Weight (kg)	280
Width (m)	1,2-1,6

- Adjustable from 1.2m to 1.6 m.
- +1D Hydraulic function needed.



DOZER BLADE			
TYPE	LG820S	LM830S	LH830S
Weight (kg)	190	250	350
Width (m)	2	2,5	2,5

- Replaceable rubber edge and steel cutting edge.
- LG 820 S non-adjustable version.
- LM 830 S with mechanical adjustment option in both direction (25°).
- LH 830 S with hydraulic adjustment option in both directions (25°).
- +1D Hydraulic function needed.



PALLET AND BAG LIFTER						
TYPE	PP8S	PP10S	PP15S	PP20S	BB10	PP15 BB
Weight (kg)	72	175	200	260	180	310
Max. loadability	0,8	1	1,5	2	1	1,5

- Multipurpose implement with common frame for:
 - pallet stacking
 - simple bale moving
 - big-bag lifting of bulk materials



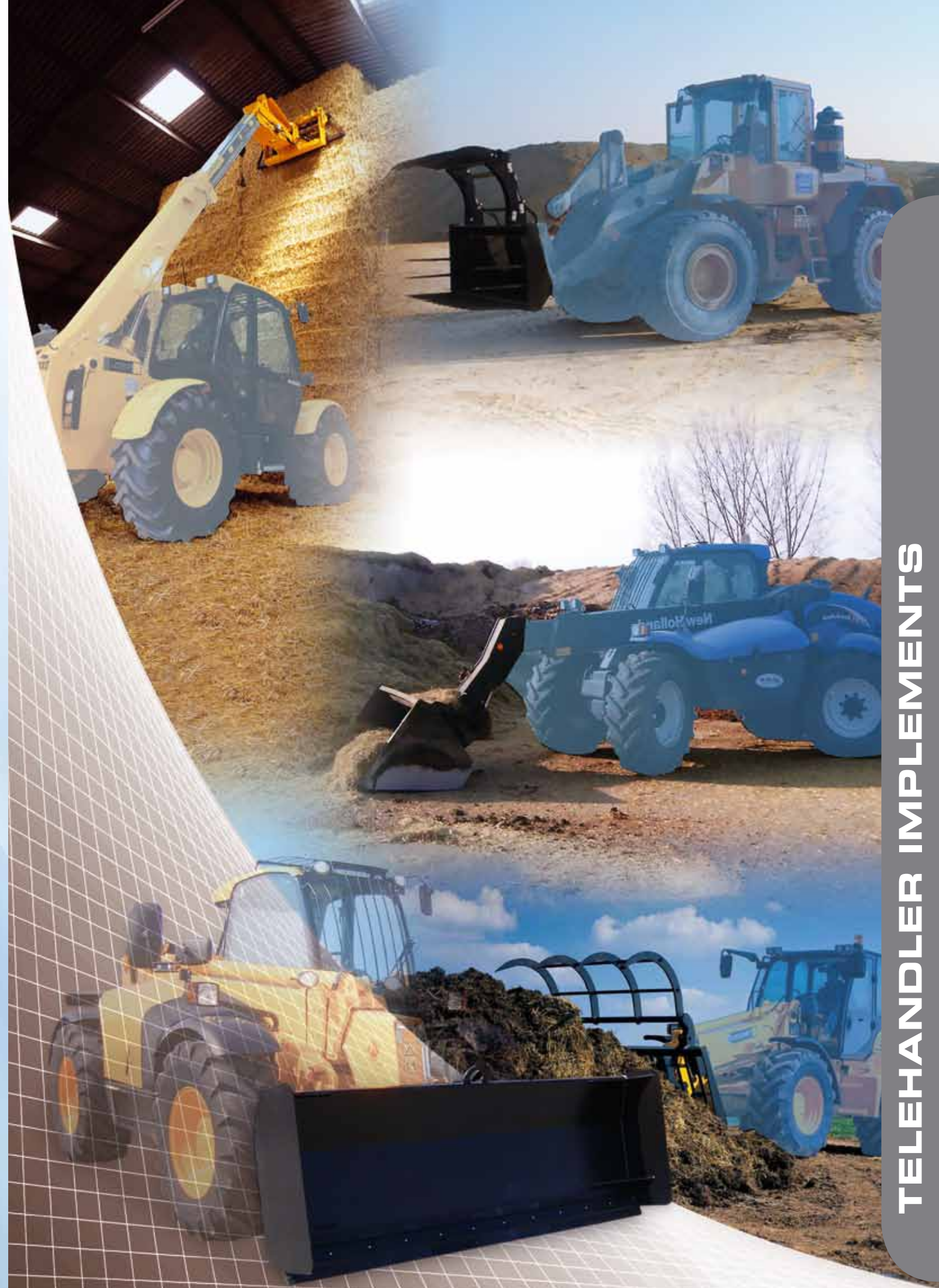
SILAGE CUTTER GRAB	
TYPE	DB15
Weight (kg)	420
Width (m)	1,5

- Implement can cut and grab 0,5m³ silage from medium compacted silage stack.
- Two robust hydraulic cylinders.
- +1D Hydraulic function needed.
- Heat treated replaceable blades.
- With reinforced Ø45 mm forged tines.



DRAG BLADE			
TYPE	VM2,5	VM2,8	VM3,2
Weight (kg)	280	300	315
Width (m)	2,5	2,8	3,2

- Repleacable rubber blade and steel edge.
- Mechanical angle adjustment.
- Can be turned by 180°, enabling dozer blade function.





GRAIN BUCKET				
TYPE	FFBL15	FFBL2	FFBL2,5	FFBL3
Weight (kg)	560	670	720	780
Volume (l)	1500	2000	2500	3000
Width (m)	2400	2400	2400	2500

- Reinforced high strength material.
- SL version: cutting edge can be turned over and replaced.



MULTI FUNCTION BUCKET				
TYPE	B4.1 150S	B4.1 170S	B4.1 200S	B4.1 220S
Weight (kg)	320	350	420	450
Volume (l)	300	320	420	430
Width (m)	1500	1700	2000	2200

- Reinforced high strength material.
- Bolted teeth.
- Opening and closing function by two double effect hydraulic cylinders.
- +1D Hydraulic function needed.



SOIL BUCKET	
TYPE	FFBT230
Weight (kg)	430
Volume (l)	1200
Width (m)	2300

- Reinforced high strength material.
- Bolted teeth.



BEET AND POTATO BASKET		
TYPE	FFG2	FFG2,5
Weight (kg)	580	630
Volume (l)	2000	2500
Width (m)	2400	2400

- Bucket body made of thick wall steel tube.
- Bucket edge made of round steel to protect beets and potatoes.



MANURE GRAB			
TYPE	FFM20	FFM23	FFM25
Weight (kg)	550	580	625
Width (m)	2000	2300	2500

- Ø45mm forged tines with double cone.
- Replaceable upper teeth.
- +1D Hydraulic function needed.
- Grab function by two double effect hydraulic cylinders.



BALE TINES		
TYPE	P1	P2
Weight (kg)	80	180
Volume (l)	2	6
Width (mm)	800	2000

- P1 Replaceable with double conic forged tines
Number of tines: 2
- P2 Replaceable forged tines with double cone
Number of tines: 6
Length of tines: 980 mm



PELICAN			
TYPE	FFBP20S	FFBP23S	FFBP25S
Weight (kg)	550	600	640
Width (m)	2000	2300	2500
Deep (mm)	650	650	650

- Implement for loading slurry, liquid manure.
- Grab function by two double effect hydraulic cylinders.
- SL version: cutting edge can be turned over and replaced.
- Replaceable upper teeth.
- +1D Hydraulic function needed.



BALE JAW	
TYPE	FFG1
Weight (kg)	260
Height (m)	1,2-1,6 m bálák

- For Stacking of Round bales.
- +1D Hydraulic function needed.



SILAGE CUTTER GRAB		
TÍPUS	FFDB17S	FFDB20S
Weight (kg)	460	580
Volume (m³)	0,6	0,8
Width (mm)	1500	2000

- Implement can cut and grab 0,5m³ silage from medium compacted silage stack.
- Two robust hydraulic cylinders.
- +1D Hydraulic function needed.
- Heat treated replaceable blades.
- With reinforced Ø45 mm forged tines.



WRAPPED BALE GRAPPLE	
TYPE	FFPB 12-16S
Weight (kg)	250
Capacity (kg)	1100
Bale diameter (mm)	1100-1700

- Adjustable from 1,2 m to 1,6 m.
- +1D Hydraulic function needed.



DOZER BLADE			
TYPE	FFLG820	FFLM820	FFLH830
Weight (kg)	235	250	380
Width (m)	2500	2500	2500
Height (mm)	800	800	800
Adjustable (fok)	fix	±25 (mech)	±25 (hidr)

- Replaceable rubber edge and steel cutting edge
- LG 820 S non-adjustable version.
- LM 830 S with mechanical adjustment option in both direction (25 °)
- LH 830 S with hydraulic adjustment option in both directions (25°)
- +1D Hydraulic function needed.

EXTENDED DOZER BLADE		
TYPE	LT2,5	LT3
Weight (kg)	420	460
Length of extension (mm)	2500	3000
Width (mm)	2500	2500

- For piling up grain in storage hangars.
- Using this implement crop piles can be higher.
- Repeacable rubber blade.



SWEEP BRUSH BUCKET			
TYPE	SK18	SK20	SK23
Weight (kg)	420	450	500
Volume (l)	810	900	1030
Width (mm)	1800	2000	2300

- Hydraulic drive.
- Brush split up in multiple segments, support wheels.



LOG GRAB	
TYPE	FFF12
Weight (kg)	350
Deep (mm)	600
Width (mm)	1200

- Log grab lifts grab logs by upper and lower arms using one hydraulic cylinder.
- Capable of loading 1250 mm logs in length.
- Frontloader must have 3 hydraulic functions.

BOX TURNER	
TYPE	FFLF
Weight (kg)	310
Width (m)	1200

- For transportation and safe dumping of standard and custom size MGTL boxes.
- While content is being dumped implement holds each side of the box thus providing minimum risk of box-breaking.
- Hydraulic turning direction, max load is 500 kg.
- +1D Hydraulic function needed.



HIGH DUMP BUCKET	
TYPE	FF BDP 3,5
Weight (kg)	1180
Width (mm)	2820
Height (mm)	1300
Volume (m³)	3,5
Deep (mm)	2000

- Tipping of bucket by double effect hydraulic cylinders.
- +1D Hydraulic function needed.
- When dumping, bucket edge is at the front loader lift height level.



PALLET AND BAG LIFTER						
TYPE	PP8S	PP10S	PP15S	PP20S	BB10	PP15 B
Weight (kg)	72	175	200	260	180	310
Max. loadability	0,8	1	1,5	2	1	1,5

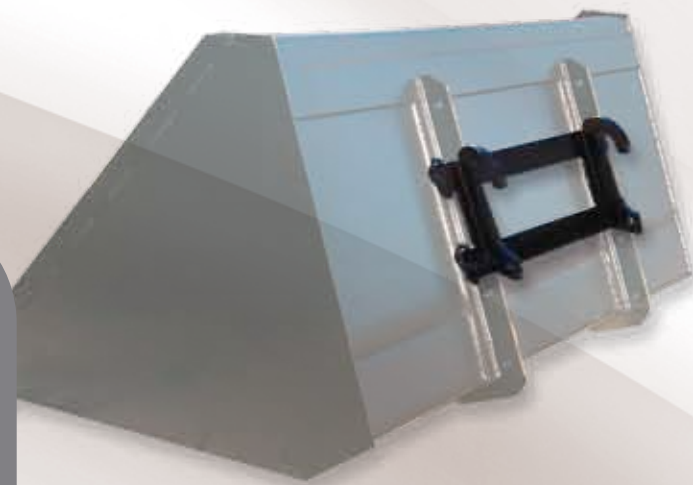
- Multipurpose implement with common frame for:
 - pallet stacking
 - simple bale moving
 - big-bag lifting of bulk materials



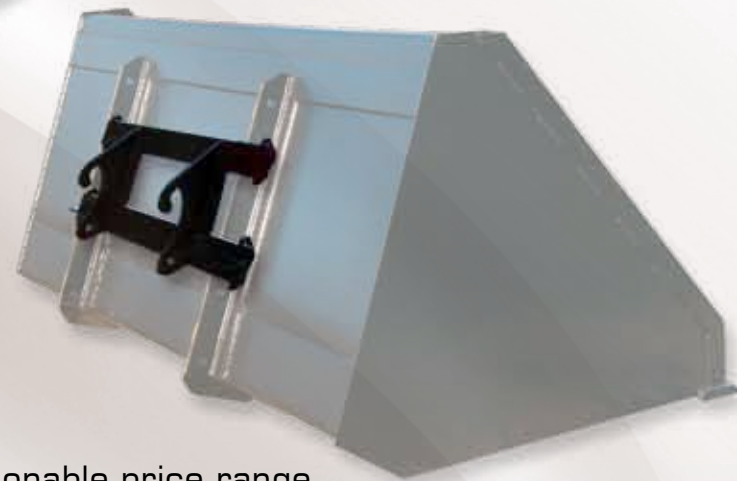
MAN BASKET	
TYPE	FFK1
Weight (kg)	180
Able to lift	2
Lifting weight (kg)	200

- Safe solution for works in elevated areas.
- Able to lift 2 persons.
- Total weight 200 kg including tools and materials.

[illegible]



Custom made designs according to customer needs.



Implements equipped with exchangeable mounting brackets.

- Precise solution
- Superior quality
- Reliability
- Reasonable price range
- Implements from the manufacturer



**Features:**

- Loosen and break up soil help water to pass through to the roots.
- Mounted with 3-5 legs scarifiers and rear roller.
- Replaceable blades.
- Adjustable distance between chisels.
- Adjustable working depth by power.

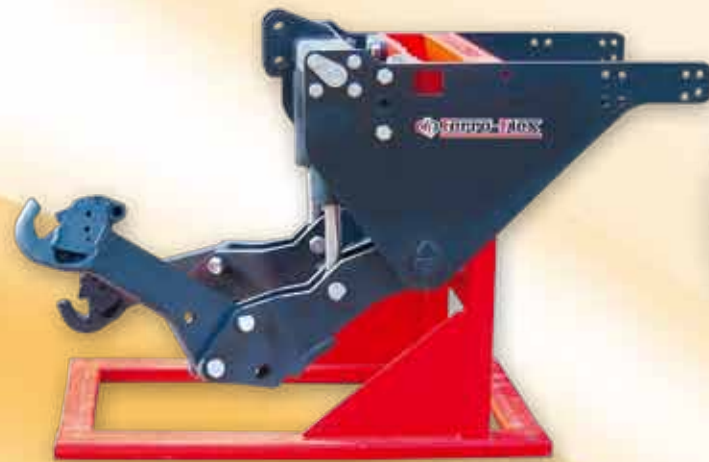
SUB SOILER		
MODEL	TL3/600-RH	TL5/600-RH
Number of blades	3	5
Thickness (mm)	30	30
Height of blades (mm)	600	600
Width of implement (mm)	2000	2700
Working width (mm)	1680	2600
Weight (kg)	580	830
Horse power needed (HP)	100-120	160-200

**Features:**

- Mounted - wheeled tines in 4 rows with replaceable chisels.
- Width straw harrow.
- Width levelling roller.

FIELD CULTIVATOR				
MODEL	FFSZK 2	FFSZK 2,5	FFSZK 3	FFSZK 5
Working width (m)	2	2,5	3	5
Working depth (cm)	10-40	10-40	10-40	10-40
Up to HP	90	120	160	200
Numbers of legs	8	10	12	20
Design	Mounted	Mounted	Mounted	Wheeled





FF RL 25 Features:

- With two double effect hydraulic cylinders.
- WALTERSCHEID linkage arms.
- Hydraulic connection points.
- Heat treated interchangeable pins with lubricating points.
- Closing valve.

FRONT-LINKAGE	
MODEL	FF RL 25
Lifting capacity (kg)	2500
Weight (kg)	310



Three point hitch transport box features:

- For use in vineyards, in orchards, in horticulture or in any other purposes according to tractor's hydraulic capacity.
- Equipped with tipping hydraulic cylinder.

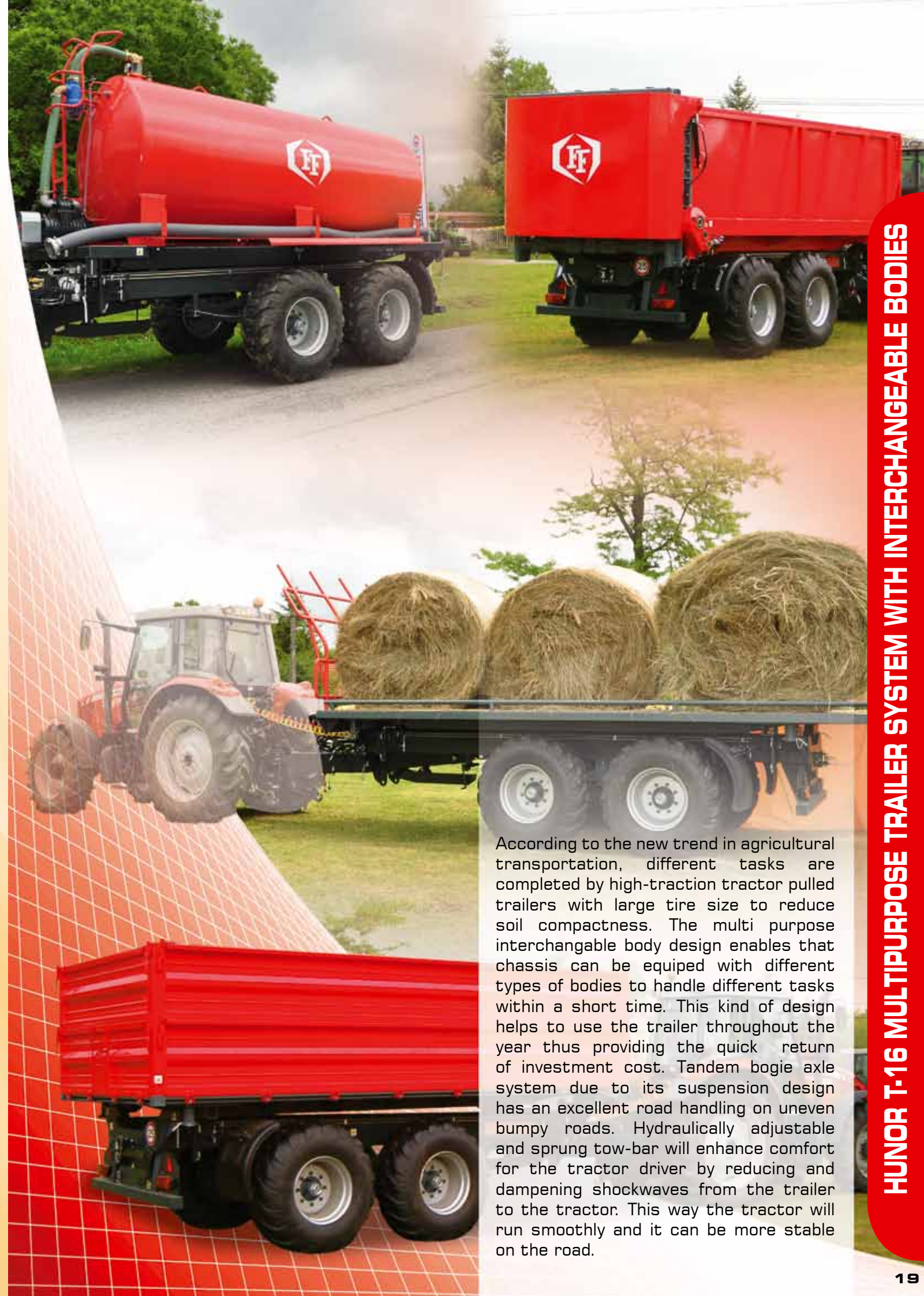
THREE POINT HITCH TRANSPORT BOX	
MODEL	SZLF 750
Volume (l)	750
Weight (kg)	350



Big Bag Lift Features:

- Mounted design.
- Fertilizer option.
- Support stand.
- Hydraulic pressure: 170 bar.
- Controlled by the hydraulic system of the prime mover.
- Double effect hydraulic cylinders.

BIG BAG LIFT		
MODEL	ZSML 750 L	ZSML 1000 L
Nominal loadability	700 - 1200	1080 - 1700
Max load (kg)	1200	2500
Base height level + lifting height (mm)	1080 - 4160	1080 - 4160
Extension of lifting hook (mm)	560 - 2520	560 - 2520
Weight (kg)	250	310
Lifting hook (piece)	2	2
Chain (piece)	2	2



According to the new trend in agricultural transportation, different tasks are completed by high-traction tractor pulled trailers with large tire size to reduce soil compactness. The multi purpose interchangeable body design enables that chassis can be equipped with different types of bodies to handle different tasks within a short time. This kind of design helps to use the trailer throughout the year thus providing the quick return of investment cost. Tandem bogie axle system due to its suspension design has an excellent road handling on uneven bumpy roads. Hydraulically adjustable and sprung tow-bar will enhance comfort for the tractor driver by reducing and dampening shockwaves from the trailer to the tractor. This way the tractor will run smoothly and it can be more stable on the road.

- Robust construction high strength carbon steel hollow profiles are used.
 - Tandem Bogie axles with outstanding road handling.
 - 2nd trailer hookup option (rear hydraulic , airbrake, electrical connection, tow bar coupling) .
-
- Hydraulically adjustable towbar.
 - 550 mm wide tires to avoid soil compactness.
 - Oversized brake system for secure stopping.

- Trailer bodies to be changed by hydraulic cylinders.
- Sprung tow bar with damper system to reduce shocks.
- Excellent back up manouvering.
- Sidepanels with three-layer surface treatment with optional color coating.
- 50 mm bolted hitch eye with bush.
- Slow vehicle or Agricultural trailer licencing options.



GRAIN TRAILER	
Payload (kg)	12 000
Tare weight (kg)	1180
Length of body (mm)	5410
Width of body (mm)	2430
Sideboard height (mm)	600+600
Capacity (m³)	14,5
Platform height (mm)	1390
Track width (mm)	1850
Tire size	550/60-22,5
Max speed (km/h)	40 or 25

- „Fuhrman“ reinforced sideboards.
- Three way tipping.
- Robust chassis.
- Upper or lower side board opening.
- Grain chute at the rear board.
- German made „Hestal“ side latches.
- Optional equipments: 3rd extension sideboard, tarp with winding mechanism, spare tire with bracket, step-up platform, inside, outside ladder releasable side connection.

SILAGE TRAILER	
Payload (kg)	11 000
Tare weight (kg)	2280
Length of body (mm)	5220
Width of body (mm)	2480
Sideboard height (mm)	1500
Capacity (m³)	19,4
Track width (mm)	1850
Tire size	550/60-22,5
Max speed (km/h)	40 or 25

- Multi-function application can be used for grain, construction bulk material, high volume chipped material and for silage.
- For easier dumping, body is widened by 10 cm towards the rear.
- Only the rear can be opened, thus tipping possible to backwards, extendable sideboard options can be ordered: 3rd extension sideboard tarp with winding mechanism, spare tire with bracket step up platform, inside, outside ladder, releasable side connection.

BALE TRAILER	
Payload (kg)	11 000
Tare weight (kg)	1480
Length of body (mm)	6320
Width of body (mm)	2500
Rear board height (mm)	1820
Platform area (m³)	15,5
Track width (mm)	1850
Tire size (mm)	550/60-22,5
Max speed (km/h)	40 or 25

- Capacity:
- Diam. 120 cm bales 22 pcs.
- Diam. 150 cm bales 20 pcs.
- Detacheable front and rear boards.
- Optional items: Spare tire with bracket, tie-down harnesses



MANURE SPREADER	
Payload (kg)	12 000
Tare weight (kg)	2840
Length of body (mm)	5540
Width of body (mm)	2140
Rear board height (mm)	1150
Platform area (m³)	11
Track width (mm)	1850
Tire size (mm)	550/60-22,5
Max speed (km/h)	40 or 25

- Beaters are driven from prime mover's TLT axle through the high capacity hydraulic drive system.
- „Berma” Drive system.
- Hydraulically driven feeding system which can be controlled accurately.
- Completely closed rear door, capable to handle liquid manure.
- Rear door is hydraulically moved.
- Spread area: 10-12 meters.
- Optional equipments: spare tire with bracket, step up platform, inside, outside ladder.

VACUUM TRUCK	
Payload (kg)	1600
Tare weight (kg)	2680
Tank capacity (m³)	9
Length of body (mm)	5
Width of body (mm)	1800
Track width (mm)	1850
Tire size	550/60-22,5
Max speed (km/h)	40 or 25
Vacuum (bar)	1,2
Compressor Type	PN
Suction time (min)	~ 6 min

- Driven from the tractor's TLT axle.
- Capable to suck, transport and discharge non corrosive liquids (water, sewage and liquid manure).
- Slurry sprayer equipments can be attached.
- Optional equipments: spare tire with bracket, Slurry discharge plate, Slurry discharge bracket.



- Grape trailer**
- 20m³ container.
 - Stainless steel construction.
 - Discharge is through auger.
 - Hydromotor driven auger.
 - Optional equipments: spare tire with bracket, step up platform inside, outside ladder.



- Log Trailer:**
- Designed for 12 Ton payload.
 - Robust construction.
 - Front panel is reinforced to protect prime mover.
 - Detachable pillars.
 - Optional equipments: spare tire with bracket, step up platform.





Fabrication, assembly and construction of steel buildings from simple roof structures to turn-key insulated halls.

- Steel Construction
- Steel assemblies for customer's need
- Containers, Silos, Fabrication of agricultural storage systems
- Construction of ventilation and Suction pipelines
- Building of Supporting structures.
- Fabrication of technological towers
- Fabrication of conveyor systems
- Fabrication of fence, gates and signs





FERRO-FLEX Gép- és Szerkezetgyártó Kft.

H-8693 Lengyeltóti, Rákóczi u. 30.

Telephone: +36 85 330 069 Fax: +36 85 530 027

E-mail: ferroflex@ferroflex.hu

management@ferroflex.hu

Web: www.ferroflex.hu

